



BPW Landing Gear SUPPORTING THE LOAD

Increase the efficiency and safety of your trailer with the BPW landing gear.

Advantages



ROBUST

The reinforced shaft and the continuous fastening plate guarantee optimum strength. BPW Landing legs support 40kN lateral forces and 47kN in driving direction.



CONVENIENT

Low crank forces required during operation and make day-to-day use easier. Mounting plates made for easy and flexible installation.



ECONOMICAL

The BPW Landing gear is particularly light weight. Corrosion resistance and 3 year maintenance friendly.

You are always in a good position.

BPW Axles (Pty) Ltd
Tel (011) 681-3300, (011) 680-1443
E-mail: bpwsales@bpw.co.za | Website: www.bpw.co.za

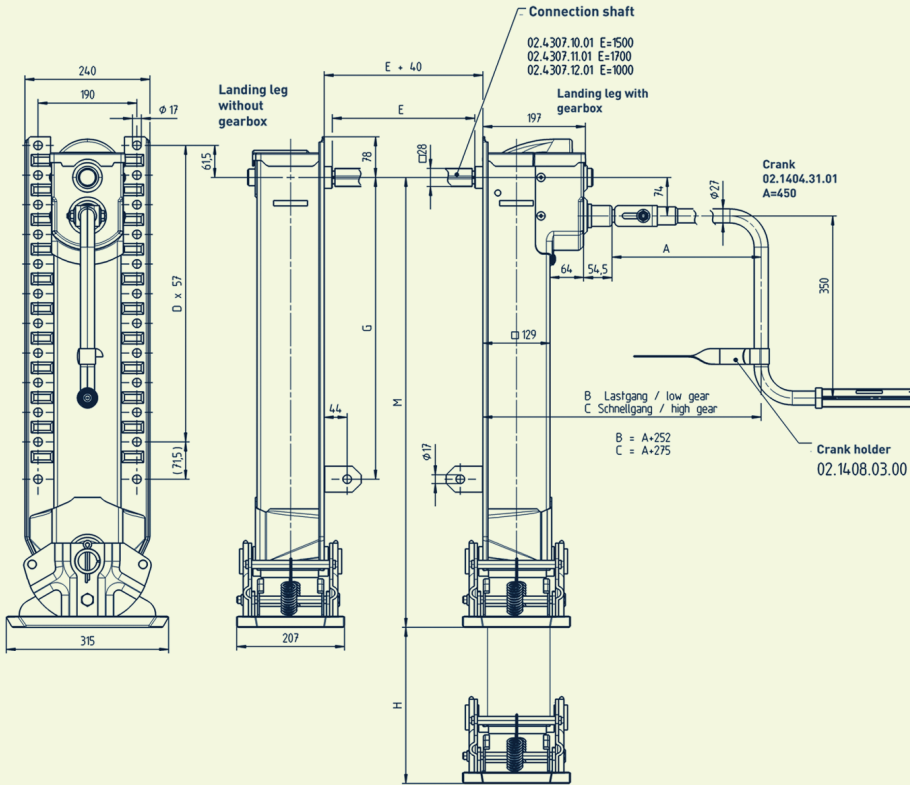
we think transport





BPW Landing Gear

OVERVIEW DRAWING



All dimensions in mm

TECHNICAL DATA (per set)

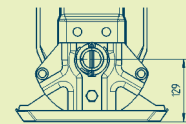
Lifting capacity	24 t
Static load capacity	50 t
Lateral forces	40kN
Driving direction	47kN

Travel per crank rotation

Slow gear	0,8 mm
Fast gear	9,8 mm
Crank force	175N

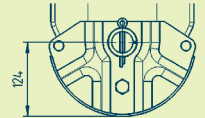
FOOT VARIANTS

Design SHD
(Standard for air suspensions)



BPW code number:
02.3710.05.01

Design A



BPW code number:
02.3710.03.01

STANDARD PORTFOLIO

Stock code	Length M	Dimension H	Dimension G	Number D	Support foot design	BPW code number without gear drive	BPW code number with gear drive	Weight (kg)
BPW LL-A-750	750	405	480	8	A	02.3710.26.02	02.3710.27.02	88 kg
BPW LL-S-750-HD	750	405	480	8	S	02.3710.22.02	02.3710.23.02	99 kg
BPW LL-A-850	850	505	580	8	A	02.3710.46.02	02.3710.47.02	96 kg
BPW LL-S-850-HD	850	505	580	8	S	02.3710.42.02	02.3710.43.02	107 kg
BPW LL-A-900	900	540	630	9	A	02.3710.80.02	02.3710.81.02	100 kg
BPW LL-S-900-HD	900	540	630	9	S	02.3710.82.02	02.3710.83.02	111 kg

Other versions available on request

CRANK HANDLE

Dimension A	Dimension B (low gear)	Dimension C (high gear)	BPW code number
450	715	740	02.1404.31.01

CONNECTION SHAFT

Dimension E	BPW code number
1500	02.4307.10.01