

we think transport



BPW WORKSHOP TOOLS RANGE

WHEN YOU'RE WORKING WITH QUALITY...

BPW tools are designed to be particularly resistant to wear and tear, and guarantee an extremely long service life, even with frequent use. The special tools ensure that all recommended service work can be performed **safely, quickly and easily.**



ABS EXCITER RING ASSEMBLY TOOLS

ECO Plus 1 & 2 - 9t

5 Spigot hub

16.020.22953

bayonet fit over the seal

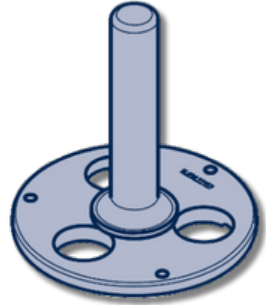


ECO Plus 3 - 9t

5 Spigot round hub
For single wheels

16.038.22953

ring pressed over oil seal

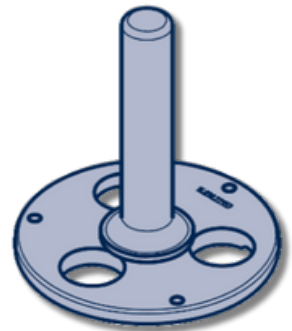
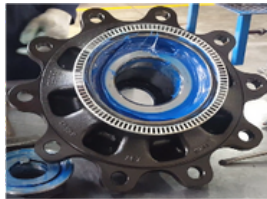


ECO Plus 1 10 - 12t

4 Spigot hub

16.038.22957A

ring pressed on the outside of hub



ECO Plus 3 10 - 12t

4 Spigot hub

JIG122.01

adapter ring to press on ABS ring



HUB CAP SOCKETS & FLAT SPANNERS FOR ECO / ECO PLUS

ECO Axles 6 - 9t

03.364.29.02.0 - SW 95

33116 - 32310



ECO Axles 10/12t & ECO Plus 1 & 3

03.364.29.03.0 - SW 110

33118 - 33213



Hub cap removal spanner

03.339.05.04.0 - SW 110



ECO Plus 2

03.339.05.02.0 - SW 120



AXLE NUT SOCKETS FOR ECO, ECO PLUS 1 & ECO PLUS 3

ECO Axles 6 - 9t

03.364.20.03.0 - SW 65

33116 - 32310



ECO Axles 10 - 12t

03.364.24.03.0 - SW 80

33118 - 33213



ECO Plus 1 & 3

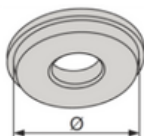
05.364.26.05.9 - SW 95

PRESS TOOLS FOR INSERTING BEARING CUPS & GREASING APPLICATORS

Bearing Press tools

15.011.20052 Ø 142 33118

15.013.20052 Ø 113 33213



Grease Applicators

ECO 6 - 9t

99.00.000.9.54
33116 / 32310

ECO 10 - 12t & ECO Plus

99.00.000.9.55
33118 / 33213



Grease nipple adapter

15.069.22935



TSB & TS2 CALLIPER TOOLBOX

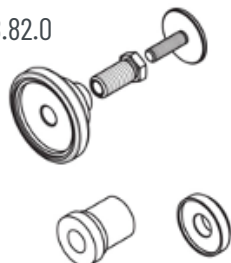
Calliper toolbox

99.00.000.9.76



TS2 Supplemental kit

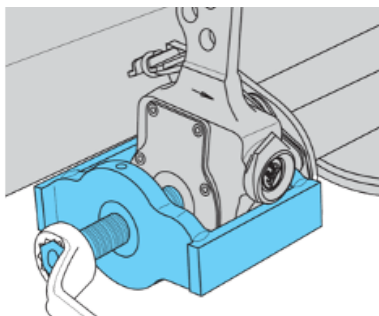
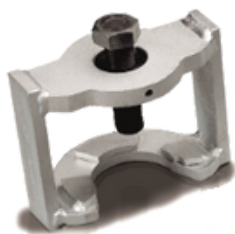
09.801.08.82.0



SLACK ADJUSTER & HUB PULLERS

Slack adjuster puller

02.4306.15.00



Hub puller

JIG 028.4



C-CLIP TOOL & DRIVING MANDREL FOR S-CAM BUSHES

C-clip tool

026.050.22526



Driving mandrel for S-cam bushes

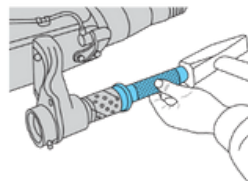
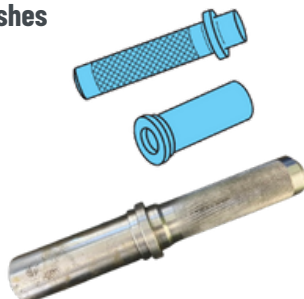
2 Piece tool

Handle 02.0619.02.00

Mandrel 03.084.17.01.0

1 Piece tool

05.001.04.04.0



WORKSHOP TOOLS

Calibrated torque wrenches & torque multiplier

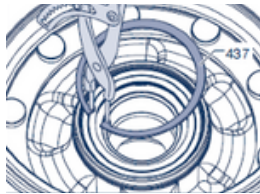
To tighten the bolt/screw connections to manufacturers specification

Calibrate at least once a year.



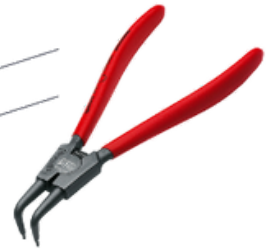
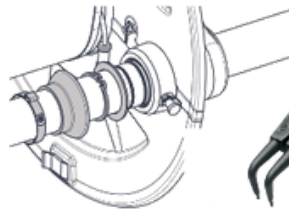
Closed circlip plier

Circlips fitted in the hub



Open circlip plier

Circlips fitted on the camshaft



Heel/Pry bar

For removal of pressed ABS rings



Copper hammer

For driving out wheel studs/screws or bolts - not to damage threads

